

# HOW TO ASSEMBLE FUNERAL DIRECTOR MODEL SIDE RAILS

Drawing Number	Part Name
1	TUBING COLLAR SCREW
2	SHORT LINK - A HEAD
3	OUTSIDE SIDE TUBE - AC
4	A HEAD
5	LONG LINK
6	LINK CONNECTING SCREW

STEP 1: REMOVE TEMPORARY BOLT (NOT SHOWN) FROM LONG LINK (#5) BEING CAREFUL NOT TO LET LONG LINK FALL INSIDE TUBING.

STEP 2: REMOVE LINK CONNECTING SCREW (#6) FROM SHORT LINK (#2).

STEP 3: ORIENT EACH SHORT LINK (#2) TO MATCH THIS DIAGRAM.

STEP 4: POSITION THE LONG LINK (#5) INTO THE SLOT OF THE SHORT LINK (#2) AND SECURE USING LINK CONN. SCREW (#6).

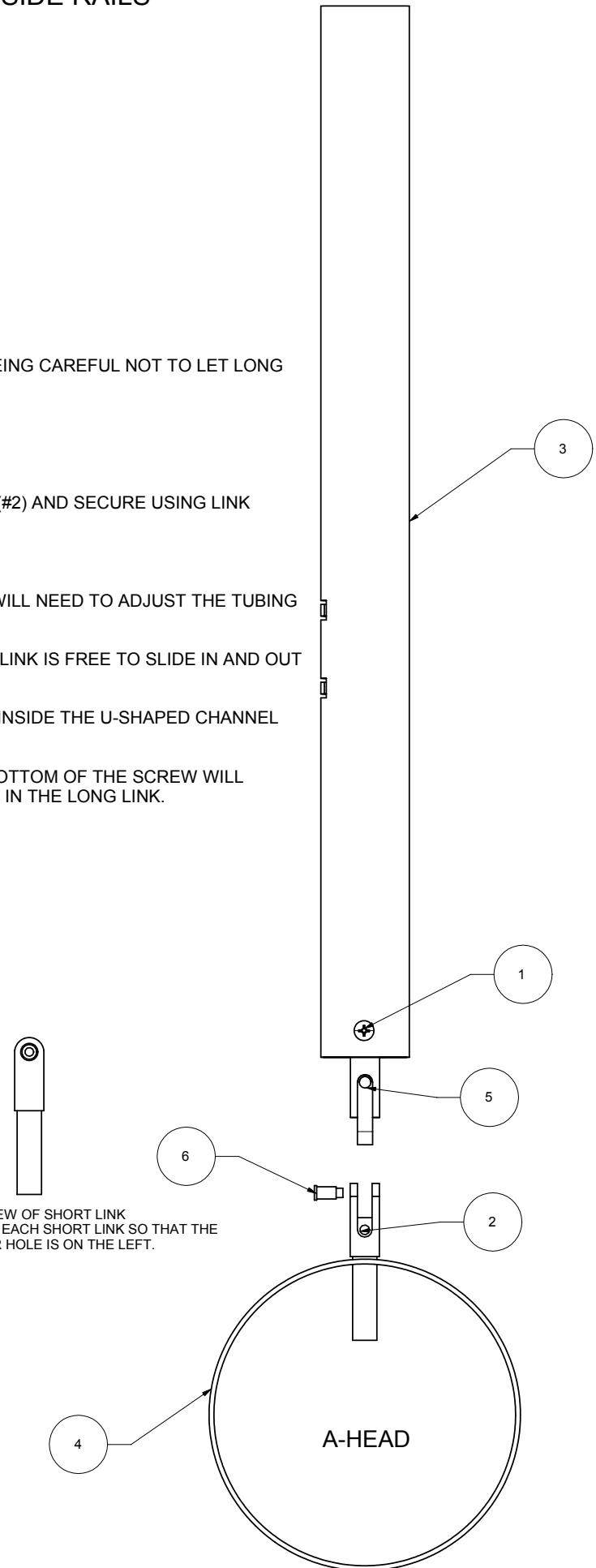
STEP 5: REPEAT STEPS 1-4 FOR THE THREE REMAINING HEADS.

ONCE ALL SHORT LINKS AND LONG LINKS ARE FASTENED TOGETHER YOU WILL NEED TO ADJUST THE TUBING COLLAR SCREW.

STEP 6: LIGHTLY LOOSEN TUBING COLLAR SCREW (#1) SO THAT THE LONG LINK IS FREE TO SLIDE IN AND OUT OF THE SIDE TUBE (#3).

STEP 7: POSITION THE SIDE TUBE SO THAT TUBING COLLAR SCREW (#1) IS INSIDE THE U-SHAPED CHANNEL OF THE LONG LINK (REFER TO WHERE ARROW #5 IS POINTING).

STEP 8: TIGHTEN TUBING COLLAR SCREW. WHEN DONE PROPERLY, THE BOTTOM OF THE SCREW WILL PREVENT THE SIDE TUBE FROM ADVANCING PAST THE U-SHAPED CHANNEL IN THE LONG LINK.



SIDE VIEW OF SHORT LINK  
ORIENT EACH SHORT LINK SO THAT THE  
LARGER HOLE IS ON THE LEFT.